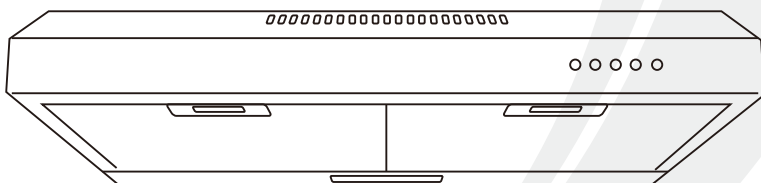


FIREGAS

INSTALLATION AND USER'S MANUAL



FGS-ESF51A2060AC
FGS-EBF51A2060AC
FGS-ESF52A2060AC
FGS-EBF52A2060AC
FGS-ESF51A2160AC
FGS-EBF51A2160AC
FGS-ESF52A2160AC
FGS-EBF52A2160AC

IMPORTANT NOTICE:

Read and save these instructions.

Installer: Leave this guide with the homeowner.

Homeowner: Keep this guide for future reference.

EN

DE

FR

IT

ES

www.firegaskitchen.com

CONTENT

| | |
|-------------------------------------|-----|
| Introduction | 2 |
| Safety Precaution | 2 |
| Parts Diagram | 3 |
| Installation Instructions | 3-4 |
| Air Outlet Installation Method..... | 5 |
| Installation..... | 5-7 |
| Operation | 7 |
| Maintenance | 8-9 |
| Specification | 9 |
| Trouble-Shooting | 10 |
| Environmental Protection | 10 |

NOTE:

You can also watch the installation video from **Support > Installation Guide** by visiting our website: **www.firegaskitchen.com**

We will update at any time, please visit the website for more information.

ATTENTION:

Please remove the carbon filter in rainy and humid weather, and use high speed to exhaust air to prevent condensation on the surface of the cooker hood.

Introduction

Thank you for choosing this cooker hood.

- This instruction manual is designed to provide you with all required instructions related to the installation, use and maintenance of the appliance.
- In order to operate the unit correctly and safely, please read this instruction manual carefully before installation and usage.

Safety Precaution

- Never let the children operate the machine.
- The cooker hood is for home use only, not suitable for barbecue, roast shop and other commercial purpose.
- Clean the cooker hood according to the instruction manual and keep the unit from danger of burning. There is a fire risk if cleaning is not carried out in accordance with the instructions.
- Please keep the kitchen room with good ventilation before connecting this appliance; please check that the power supply cord is undamaged. A damaged supply cord must be replaced by qualified service personnel only.
- Regulations concerning the discharge of air have to be fulfilled.
- This appliance can be used by children aged from 8 years and above also the persons with reduced physical, sensory or mental capabilities or lack of experience and knowledge if they have been given supervision or instruction concerning use of the appliance in a safe way and understand the hazards involved. Children shall not play with the appliance. Cleaning and user maintenance shall not be made by children without supervision.
- If the supply cord is damaged, it must be replaced by the manufacturer, its service agent or similarly qualified persons in order to avoid a hazard.



CAUTION:

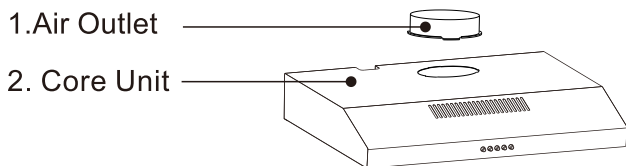
Accessible parts may become hot when used with cooking appliance.

Electrical Shock Hazard

Only plug this unit into a properly earthed outlet.

If you have doubts, seek advice from a suitably qualified engineer.

Parts Diagram



Parts Supplied



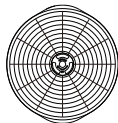
Air Outlet



Dampers



Vent Cover



Charcoal Filters
(Please refer to the model list on the last page)



×6

St4 × 30



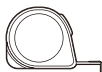
×6

φ 8 × 35

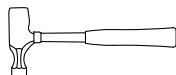
Tools Required



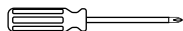
Pencil



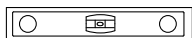
Measuring tape



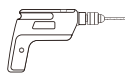
Hammer



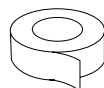
Screwdriver



Level



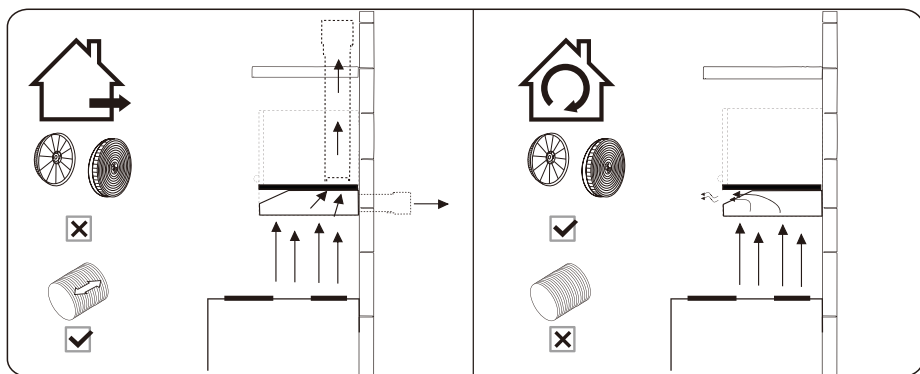
Electric drill



Duct Tape

Installation Instructions

Preparation for installation:

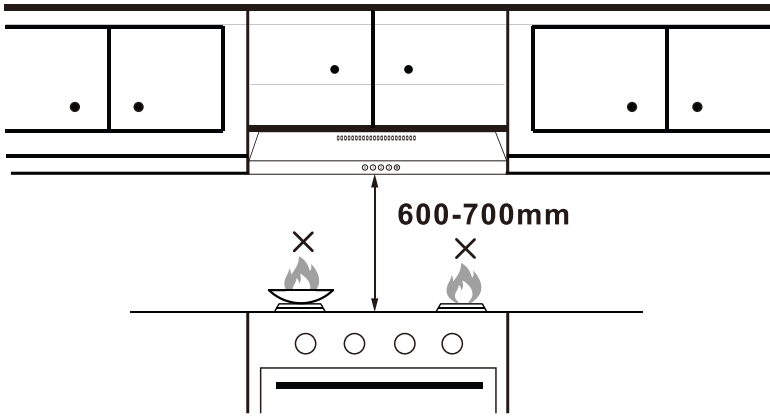


DUCTED OPTION

RECIRCULATION OPTION

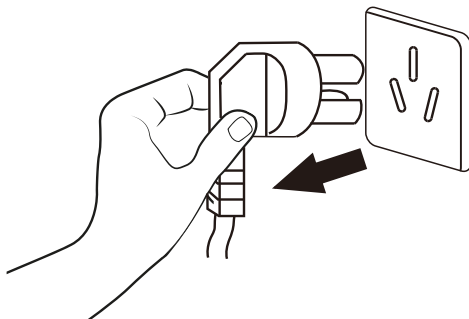
a.If you have an outlet to the outside, your cooker hood can be connected as above picture by means of a pipe (with an interior diameter of 150mm). If you don't have an outlet to the outside, you can go with recirculation mode by using charcoal filters.

Installation Requirements



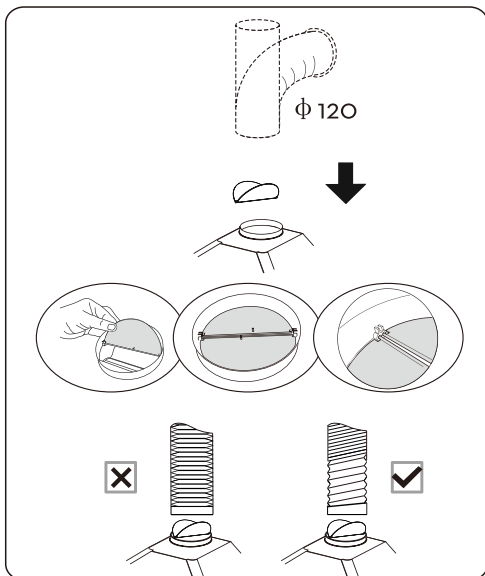
The cooker hood should be placed at a distance of 600~700mm above the cooktop for the best effect.

i
Note No open flames directly approach to the cooker hood.



Before installation, turn the unit off and unplug it from the outlet.

Air Outlet Installation Method



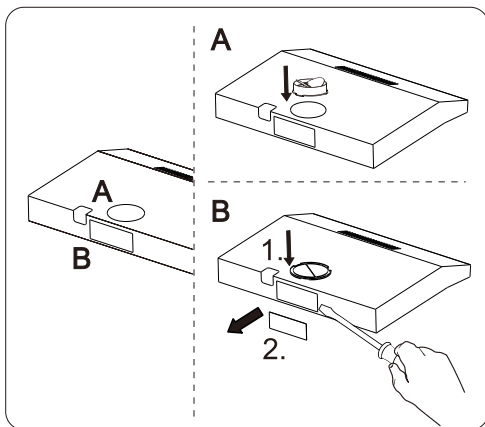
Installation method for 120mm diameter pipe: insert the one-way valve as the pic and fix the pipe.

Attention: The bump of the one-way valve must be upward.

The pipe near the air outlet need to be fully extended.

Installation

Two methods of ventilation (A&B)

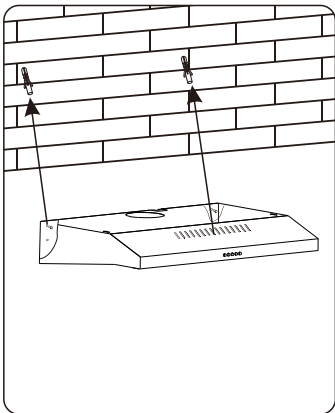


Vertical ventilation:

Method A: connect the 120mm air outlet to the top vent of slim hood.

Method B: cover the top vent of slim hood with outlet cover provided and remove the back square metal plate with tool.

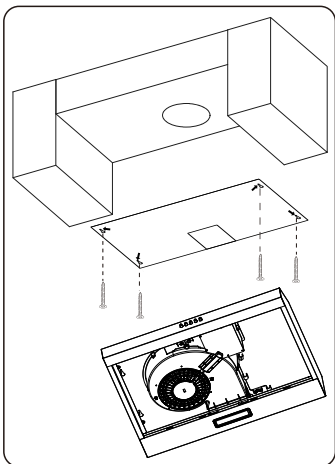
Two Method for installation(A&B)



Method A (Wall mounted):

According to the center distance of hole in the back of the slim hood, measure the position and then drill 2pcs $\text{Ø}8\text{mm}$ holes on the wall. Insert the plastic wall anchors into each holes and tighten 2pcs $\text{ST}4 \times 30$ screws into the plastic wall anchors.

Place the slim hood onto the tighten screws. Fix the cooker hood with safety screw. The two safety screw vents are positioned on the back casing, with diameter of 6mm. Put the one-way-valve onto the hood to finish installation.

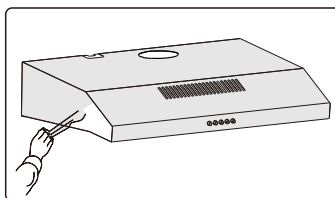
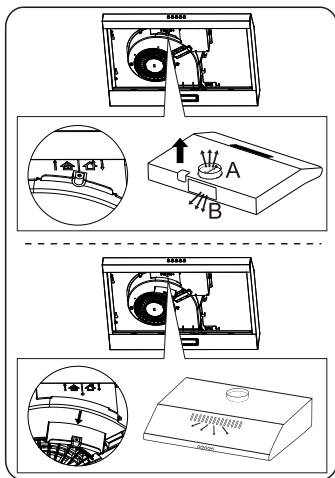


Method B (Cabinet only):

1. Stick the installation paper on the bottom of cabinet.
2. Drill 4 holes according to the paper showed. (If you need top vent, cut a square hole according to the paper showed.)
3. Remove the installation diagram after drilling the holes.
4. Insert the plastic wall anchors into each holes and tighten $\text{ST}4 \times 30$ screws into the plastic wall anchors.

i Note

1. The extensible pipe are optional accessory, not supplied.
2. Take off protection film before installation.
3. There are 2 methods for ventilation, including horizontal ventilation and vertical ventilation. Please pay attention to the ventilation method when installation.



Air ventilation setting

Outdoor exhausting: Turn the adjuster to outdoor position, install the outlet, turn on the cooker hood, then the air will be vented from the outside outlet.

Recycling: The recycling mode with carbon filter, Turn the adjuster to indoor position, install the outlet cover, turn on the cooker hood, then the air can be vented from the inside outlet.

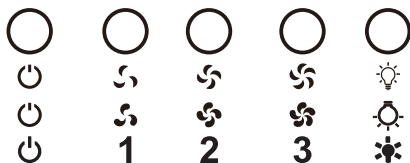
⚠ WARNING: The charcoal cannot be washed or recycled. It should be changed at most after 120 hours using. The carbon filter shouldn't be exposed to heat.

⚠ CAUTION:

BEFORE USE

Please remove the white/blue protective film on the range hood.

Operation



OFF Button

Turn off the fan.



Low Speed Button

Start the fan at low speed .
It is suitable for simmering and cooking which does not make much steam.



Medium Speed Button

Start the fan at medium speed.
This is ideal for ventilation during standard cooking operation.



High Speed Button

Start the fan at high speed.
This is ideal for ventilation when a high density of smoke or steam has been produced.



Light Button

Used for turning on/off the light.

Maintenance

Before cleaning turn the unit off and pull out the plug.

I. Regular Cleaning

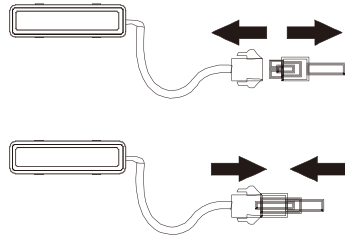
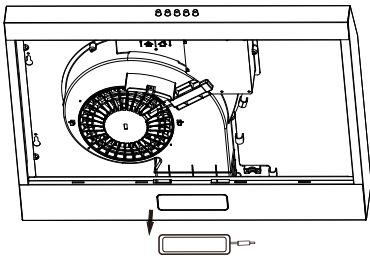
Use a soft cloth moistened with hand-warm mildly soapy water or household cleaning detergent. Never use metal pads, chemical, abrasive material or stiff brush to clean the unit.

II. LED Light Replacement

Turn the unit off and unplug the appliance.

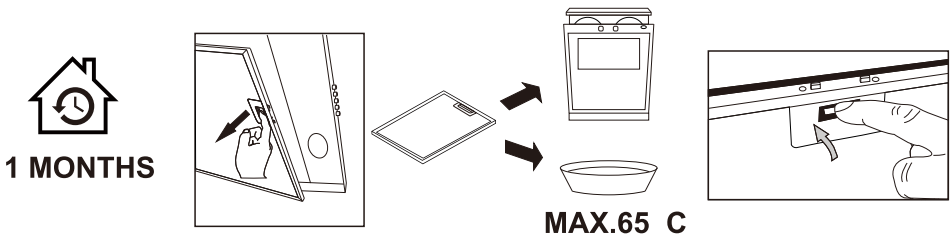
CAUTION: LAMP UNIT MAY BE HOT!

WAIT UNTIL THE UNIT IS COOL. BEFORE attempting to replace the LED lamps make sure the unit is powered off and **UNPLUGGED**.



III. Filter replacement

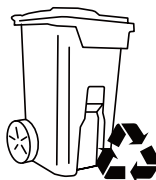
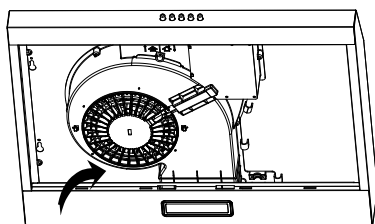
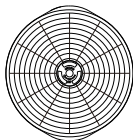
Clean the filters once a month by hand or in a dishwasher (30 °C). Do not use any acid or corrosive detergents. Do not use any abrasive detergents! Do not use anyalkaline dishwasher-detergents! (pH more than 7). Do not put the filter in the dishwasher together with tableware. Filters which are blocked with food debris do not carry a guarantee. Dry the filters properly before you reinstall them.



IV. Charcoal filters life time: Suggest changing to new one every 3 months (According to different kitchen condition, the life time of charcoal filters might be longer or shorter than 3 months).

Installation: Fix charcoal filters into the unit and turn it in as below picture shows. Repeat the same on the other side.


3 MONTHS



Important Notice:

1. Make sure the filter is securely locked. Otherwise, it would loosen and cause abnormal noise and danger.
2. Using charcoal filters would reduce the air flow of the cooker hood.

Specification

| | | |
|-------------------|----------|--|
| Model | / | FGS-ESF51A2060AC / FGS-ESF51A2160AC FGS-EBF51A2060AC / FGS-EBF51A2160AC FGS-ESF52A2060AC / FGS-ESF52A2160AC FGS-EBF52A2060AC / FGS-EBF52A2160AC |
| Voltage/Frequency | V/Hz | 220-240/50-60 |
| Rated Input Power | W | 27 |
| Lamp Power | W | 1*2 |
| Product Dimension | L*W*H mm | 595*100*440 |
| N.W | kg | 3.5 |
| Spares Option | | |
| Charcoal Filters | | |
| Aluminum Filter | | |

Trouble-Shooting

| Fault | Cause | Solution |
|---------------------------------|--|---|
| Light on, but fan does not work | The fan blade is jammed. | Switch off the unit and repair by qualified service personnel only. |
| | The motor is damaged. | |
| Both light and fan do not work | Light is burnt out. | Replace the LED light with correct rating. |
| | Power cord is loose. | Plug into the power supply again. |
| Serious Vibration of the unit | The fan blade is damaged. | Switch off the unit and repair by qualified service personnel only. |
| | The fan motor is not fixed tightly. | |
| | The unit is not hung properly on the bracket. | Take down the unit and check whether the bracket is in proper location. |
| Suction performance not good | Too far distance between the unit and the cooktop. | Readjust the distance between 600-700mm. |

Environmental Protection

1. While unpacking, the packaging materials (polythene bags, polystyrene pieces, etc.) should be kept away from children. **CHOKING HAZARD!**
2. Old and unused appliances must be sent for disposal to the responsible recycling centre. Never expose to open flames.
3. Before you dispose of an old appliance, render it inoperative. Unplug the appliance and cut off the entire power cord. Dispose of the power cord and the plug immediately.
4. Dispose of any paper and cardboard into the corresponding containers.
5. Dispose of any plastics into the corresponding containers.
6. If suitable containers are not available at your residential area, dispose of these materials at a suitable municipal collection point for waste-recycling.
7. Receive more detailed information from your retailer or your municipal facilities.



Materials marked with this symbol are recyclable.

Please contact your local authorities to receive further information.

Statement

Thank you for purchasing this product. FIREGAS is committed to providing our customers with professional quality kitchen ventilation. FIREGAS cannot assume responsibility for any consequences resulting from the use thereof.

Note

This document is designed to act as a quick reference guide for common scenarios and questions when installing a FIREGAS Range Hood. for more instructions and details please refer to Installation Guide from www.firegaskitchen.com

Tech Support

Website: www.firegaskitchen.com Email: support01@firegaskitchen.com

Warranty

For full warranty details on this product please visit: www.firegaskitchen.com
Support > Warranty Registration

FIREGAS

FIREGAS

Company: Zhongshan Firegas Technology Co., Ltd

Address: Room 302, 3rd Floor, Building 2, Factory 1, Kuidong 4th Road,

Dayan Industrial Zone, Huangpu Town, Zhongshan, Guangdong, CN

E-mail: support01@firegaskitchen.com



SUCCESS COURIER S.L.
CALLE RIO TORMOS, 10, CANTA1, DERECHA,
OFICINA 3ª PLANTA, MADRID, 28947 Spain
success@firegaskitchen.com